

TIMBER RIDGE

Living



MEET **JIM**
AND **KATE**

Resort-Style
Senior Living

FLOOR PLANS
FOR A STYLISH
RETIREMENT

HELLO!

I could tell you a lot about Timber Ridge at Talus – but I think you’d probably rather hear about it from some of the people who actually live here. That’s why I’m excited to share *Timber Ridge Living* with you.

Inside, you’ll read Jim and Kate’s story, as well as their perspective as residents of this remarkable community. You’ll also see photos of our newly finished luxury apartment homes.

There is a lovely array of beautiful floor plans still available – one of which you could call home very soon.

Many people we meet are wondering what their next step in retirement living should be. One thing we know for sure – half the battle is having the best and most complete information. We invite you to begin your education about the variety of options available in retirement living. At Timber Ridge, we believe it’s never too soon to become your own “expert.”

Where to start? It’s easy! **Begin your “Retirement Living 101” education by scheduling your personal visit to Timber Ridge.** The Timber Ridge team will listen carefully so that we can provide the most accurate information to help you confidently plan your route for your ideal future. We’ll help you determine the right fit based on your financial and long-term retirement living goals, even if another option would be a better fit. Think of us as your personal advocates, dedicated to ensuring you have the very best plan and future.

We look forward to empowering you on your personal exploration. Please call to begin – or continue – your retirement living education. We look forward to hearing from you soon!

Jill White

Jill White
Marketing Director
425.654.4439

Does This Sound Like You?

You’re tempted to take advantage of the amazing local housing market and the low interest rates so attractive to today’s buyers, but you find yourself wondering what your next steps in retirement living should be. If so, start your research today by calling Timber Ridge at **425.645.4439**.

100 Timber Ridge Way NW • Issaquah, WA 98027
TimberRidgeLCS.com

MEET JIM AND KATE

Jim and Kate have worked hard to enjoy the fruits of their labor. Jim is a retired physician and Kate is a retired nurse. Like many couples, they’ve raised a family, traveled the world and, until very recently, enjoyed their family home and vacation home. Their decision to move to Timber Ridge at Talus came about as part of their plan to remain independent and be well-positioned for the future.



NEW HOME, SAME PASSIONS

Jim and Kate are longtime wine collectors. They were pleasantly surprised that they could customize their kitchen to accommodate a specialized wine storage refrigerator.



THE IMPORTANCE OF PLANNING AHEAD

With their mutual backgrounds in medicine, Jim and Kate know all too well how important it is to be prepared for the future. Not just to ensure that their current and future needs will be provided for, but that their family will never be enlisted to “help” or have cause to worry. This autonomy now defines freedom for Jim and Kate. “Our children were supportive of our move, and that’s a wonderful feeling,” says Jim.



DID YOU KNOW?

Before making the move to Timber Ridge, you’ll have a Private Strategic Planning Session, where we’ll work with you to develop a customized moving plan to help make your move as seamless as possible.

TIME TO DO WHAT MAKES YOU HAPPY

With less to worry about, Jim and Kate now have more time to do what they really enjoy. They remain avid travelers, and love the ease and freedom of coming and going from their new home base at Timber Ridge.

“We love the fact that we can just pack up and go. We don’t worry about home security, our roof or the plumbing. It’s just lock and leave,” explains Kate.

Kate can’t even imagine a time before weekly housekeeping and linen service, as well as the delicious and convenient food and beverage service. She admits that she’s feeling spoiled living at Timber Ridge.

Kate enjoys cozying up with a good book, admiring the world-class views from her 6th-floor apartment home, and being a tourist in her own backyard. “We’re just minutes from Seattle and Bellevue,” says Kate. “And Issaquah is a charming and unique small town with plenty to enjoy.”

Set against a dramatic backdrop of the Cascades, it’s hard to find a place more special to call home.



“We find the natural beauty of the surrounding area a perfect match for the lodge-like architecture of Timber Ridge at Talus.”

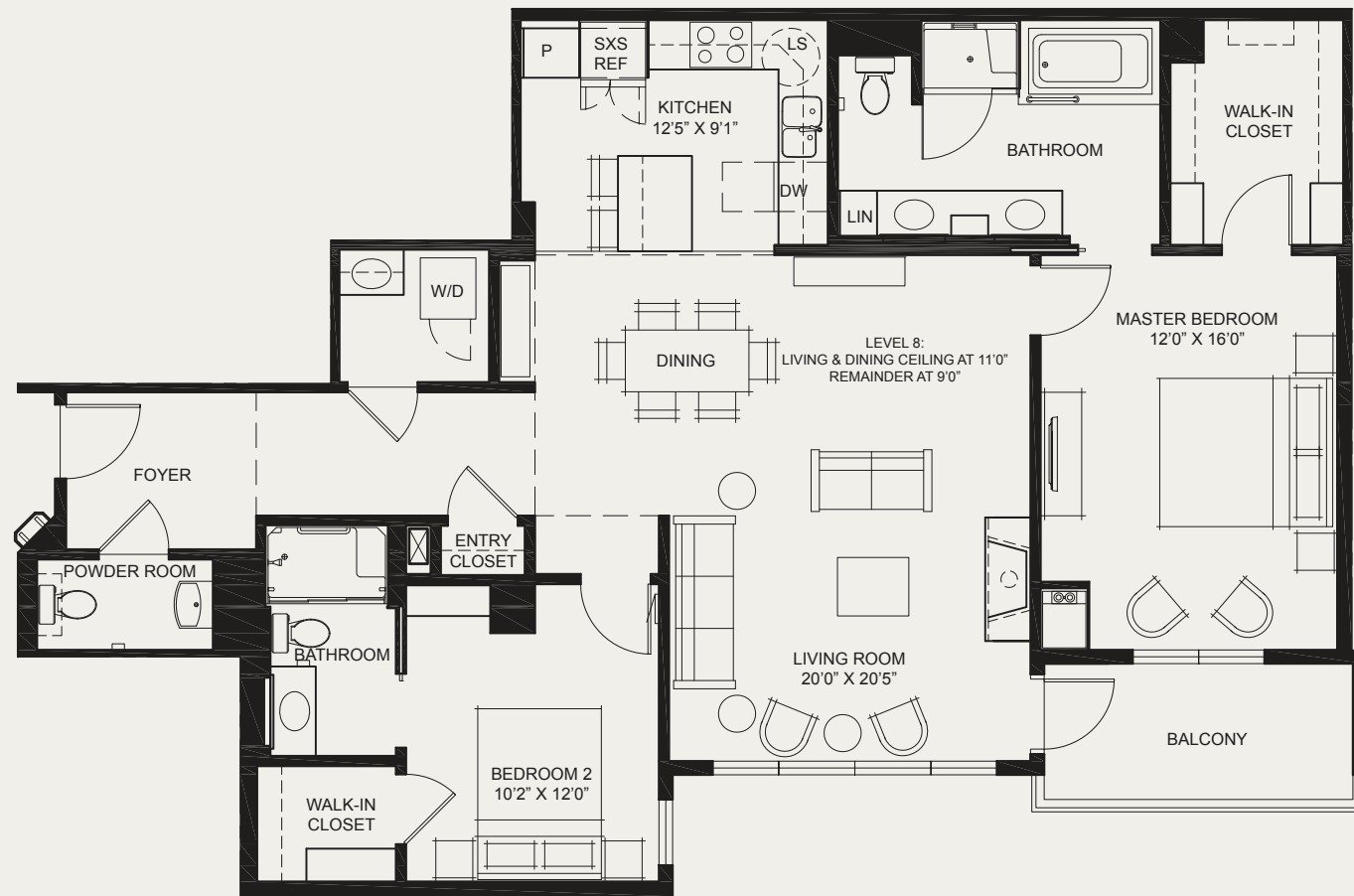


PICTURE PERFECT

An avid photographer, Jim customized the den in their Timber Ridge home to serve as his photography studio, with custom-designed built-ins and special window treatments to make digital photo editing and reviewing of images much easier.

Willow II

2 BEDROOM



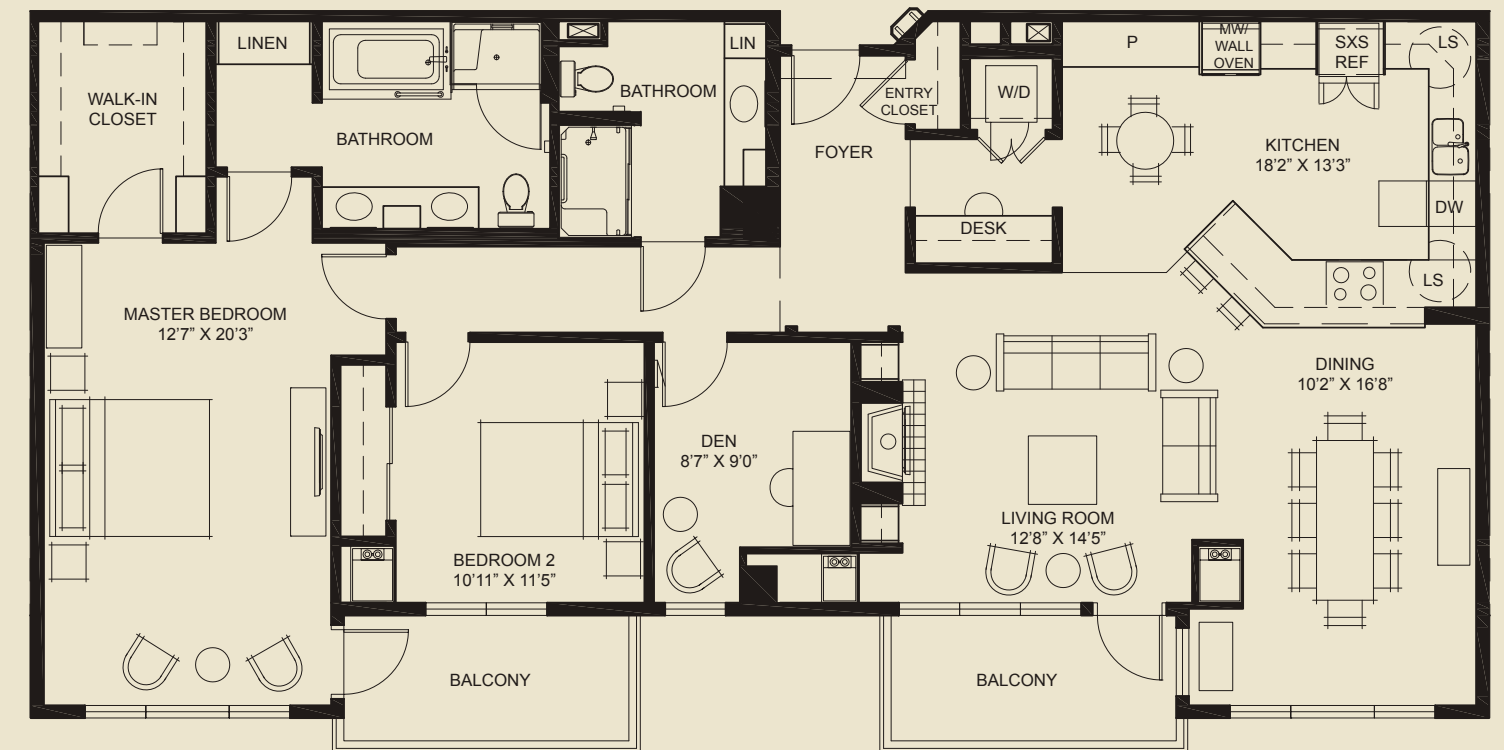
Willow II

Each bedroom in this spacious apartment has a walk-in closet and its own bathroom, making this an ideal home for entertaining overnight guests. Large windows give this space a bright and airy feeling. The Willow II features an abundance of wall space uniquely suited for any art collector. You'll also enjoy fabulous views from your private balcony.



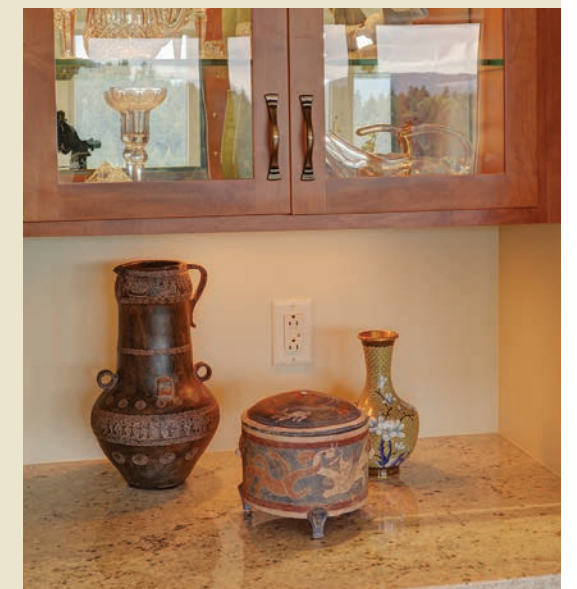
Yellow Cedar II

2 BEDROOM WITH DEN



Yellow Cedar II

Need a guest room? A home office or a craft room? With two bedrooms, two bathrooms and a den, you'll have plenty of opportunities to make this space truly yours. And with two balconies, you'll have plenty of opportunities to sit back and enjoy the amazing view.



SEE FOR YOURSELF WHAT TIMBER RIDGE LIVING IS ALL ABOUT.


Call 425.427.2929 or go to TimberRidgeLCS.com to schedule a visit.




TIMBER RIDGE
A T T A L U S

100 Timber Ridge Way NW
Issaquah, WA 98027
TimberRidgeLCS.com



Managed by  Life Care Services®